

6 Award-Winning Kitchens • New England Getaway Guide • Trends In Color And Design

NEW ENGLAND

# LIVING





M O D E L

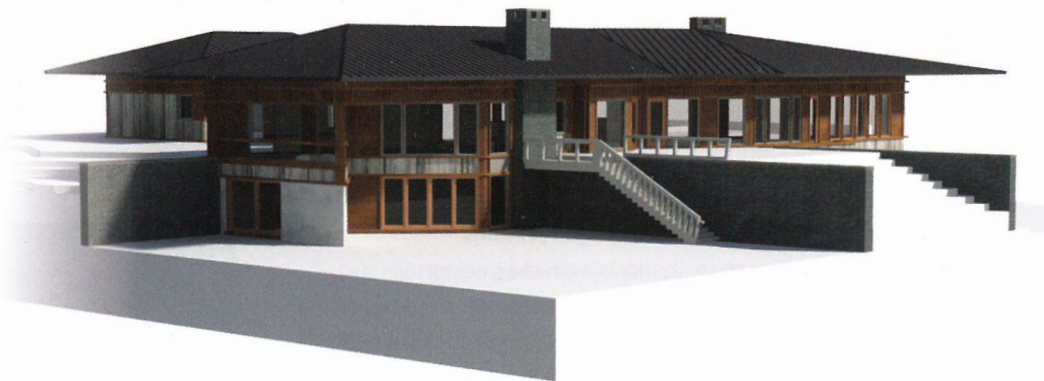
H O M E S

## INTERVIEWS BY ROB DUCA

**At the Marvin Experience Center at 7 Tide, six 3-D models of actual homes are prominently displayed. They were selected from submissions to the Marvin Windows-sponsored annual Architects Challenge.**

“These homes are meant to stimulate conversation and to inspire people to think about what they like,” says Barbara Bradlee, a brand consultant for the Marvin Experience Center. “With Marvin products, you can design anything in size and scale, from contemporary and traditional to a ski house or a coastal home.”

We asked each of the architects represented to discuss their design approach, what inspires them and what it means to be included in the Marvin Experience Center.



All 3-D models were designed and created by David Munson ([munson3d.com](http://munson3d.com)).





ERIC ROTH PHOTOGRAPHY

## GARY WOLF

WOLF ARCHITECTS, INC., BOSTON, MASSACHUSETTS

**M**y starting points for a project might be related to a feature or quality of the site, a characteristic of the homeowner, an unusual element or a client's specific request. Ideally, all of these factors interact to generate the initial inspiration.

For the project that we called the "Sustainable Urban Villa," we selected a combination of fixed and operable windows, choosing them for function, based on the views and the sunlight, and for the look. That gave us the opportunity for a customized pattern of muntin bars that sub-divide the windows into stacks of horizontal lights and panes. Marvin's Ultimate Sliders afford the greatest sense of opening without intruding into or out of the room the way a casement window would. We also used awning windows at the stairs and in a bathroom for ventilation.

When you're connecting the inside to the outside, the types of dividers in the windows, especially the mullions and frame sash that separate each window, is important. For example, the horizontal sash bar in a double-hung window often ends up at eye level, obstructing your view to the outside.

It's gratifying to have this house selected for display because it is a very individualized residence that was designed to specific conditions and to the goals and personalities of the homeowners. The fact that no one was thinking of such recognition makes it all the more special.

